



Hong Kong Mega-I Data Center Promotion

Exploring Success Together

Legal Disclaimer

The content of this presentation is proprietary information of China Telecom (Americas) Corporation. All intellectual property rights contained in this document, including but not limited to copyright, trademark, and tradename, are owned or licensed by China Telecom (Americas) Corporation or its affiliates. The information contained in this presentation is provided for informational purposes only.



General Introduction

Mega-I Data Center, HK

The Hong Kong Mega-I Data Center is located on Hong Kong Island and is the most popular Carrier Hotel in Hong Kong. It is very convenient to interconnect with domestic and international operators. It is an important access for mainstream cloud vendors.

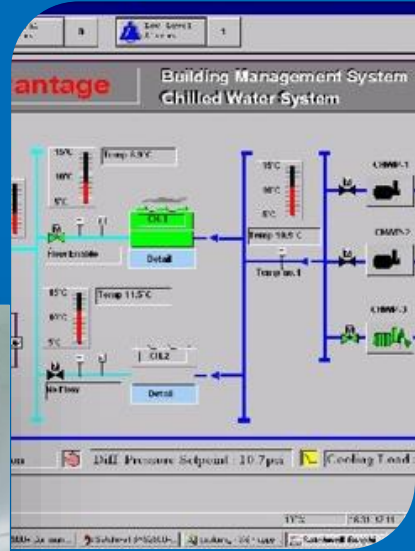
- TIA942 Standard: Tier III
- N+N UPS redundancy design + 15 mins full load battery
- N+1 CRAC and hot aisle design
- PUE = 1.7
- CT transmission pop in MMR connect to local service provider such as PCCW, HKBN, HGC.
- Over 200+ Telco carriers, ISP, and other types of service providers connected by submarine cable systems from all over the world, easy for the customer to select and connect with their preferred network service providers
- Fiber duct and cable basket on the top of the cabinet connect to the MMR



Mega-I Data Center

Mega-I Technical Specification

- Floor loading: 500KG / square mile
- Power Supply: Dual feed 20Amp@220V with UPS and diesel generator
- Temp: 20° C ~ 25° C, Humidity: 50% +/- 20%
- Fire Detection and Protection: Smoke Detection Alarm system and FM200 gas fire suppression system
- Security system: CCTV, access control system, 7x24 site access, entry registration
- Cabinet Dimension: 711mm Width x 915mm Depth x 42U Height
- In-House wiring: place order to CT (7 working days)



Services

Customers can choose different products package based on their needs.
Customized services available.

01

Basic Offering

- Rack Rental
- VIP hosting room rental

02

Security Services

- Firewall Management
- Intrusion Detection
- DDoS attack Defense
- Security Assessment/Optimization

03

Maintenance Services

- Network equipment install/upgrade
- Smart Hands

04

Data Storage Services

- Data Storage
- Data Backup
- Data Recovery

05

Network Optimization

- Load Balancing
- WAN Optimization

06

Management & Monitoring

- Network Traffic Report
- Application Data Report
- Abnormal Traffic Alert
- Network Availability Analysis
- Web Application Monitoring

07

Disaster Recovery/Backup

- Full Backup/Recovery Service
- Extended Services
- Disaster/Recovery Outsourcing Service
- Disaster/Recovery Maintenance Services

08

Other Value-Added Services

- DNS Resolution
- Dedicated International Line
- WAN Connections – MPLS, IEPL, IPLC

Carriers & Service Providers

Carrier neutral DC can connect to more than 200 global, mainland China and local telecommunication providers, ISPs and other types of service providers. Example as follows:

-
- | | | |
|-------------------|--|---|
| • Akami | • ISIX Communication | • Telecom Italia Sparkle |
| • Amazon | • KT | • Telekom Malaysia Berhad (TM) |
| • China Mobile | • Maxis Communication | • Teledcomunikasi Indonesia Int (TELIN) |
| • China Unicorn | • Microsoft | • Telia Carrier |
| • CMC | • MobiCorn | • True Internet Corporation |
| • Datapine | • Mtel | • Verizon Viettel |
| • Dito Telecom | • NTT | • ViewQwest |
| • Enjoyvc | • Orange | • VNPT |
| • Equinix Connect | • PCCW | • Vocus Communications |
| • Globe Telecom | • Singtel | • Vodafone |
| • GTT | • Starhub | • VTC DIGICOM Co., Ltd |
| • HGC | • Tata Communications | • Zenlayer |
| • HKBN | • Telecom International Myanmar Co., Ltd | |
| • Huawei Cloud | | |
-



Mega-I Promotion Details



Location: L.27 Mega-I Advantage Building, 399 Chai Wan Rd, Chai Wan, Hong Kong.

Whole floor new data hall in Mega-I on level 27

MRC: Up to 20% off for 4-6KVA/rack

Free one cross connect per cabinet to MMR

Internet to China: 30% off per M for bandwidth $\leq 30\text{M}$

Min Contract Terms: 24 months

Promotion Period: Aug. 1, 2021 – Oct. 31, 2021

PI Annually: 3% after contract terms

Contact Us

607 Herndon Parkway, Suite 201
Herndon, VA 20170

marketing@ctamericas.com

www.ctamericas.com

www.ctamericas.com/hong-kong-tko-data-center-promotion

